



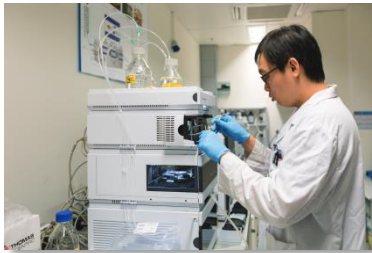
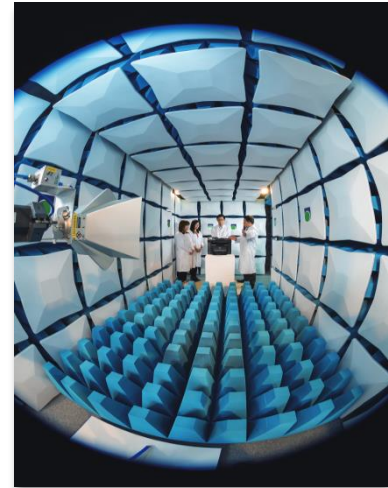
Full-Time Face-to-Face Programme

The Hong Kong Government recognised the testing and certification (T&C) industry as one of the six economic areas where Hong Kong enjoys clear advantages. In line with both Society's need and Government's strategic direction, The Open University of Hong Kong has offered a 4-year full-time face-to-face degree programme BEng (Hons) in Testing and Certification since 2013. The Programme is designed in accordance with the criteria of HKIE's Professional Accreditation for Engineering Degree. Recently, the Programme has also received subsidy from the Government under the Study Subsidy Scheme for Designated Professions/Sectors (SSSDP).

- Our Programme is accredited by the Hong Kong Institute of Engineers (HKIE) under Washington Accord
- Unique degree programme comprehensively designed for the Testing and Certification industry
- Strong industrial support with **industrial training** and **placement**
- Two areas of specialization for different needs:
 - Electrical & Electronics Stream
 - Physical & Mechanical Stream

Subsidised under SSSDP

Accredited by HKIE



Career Prospects

Students of the BEng (Hons) in Testing and Certification are well trained in the knowledge as well as skills in various aspects of testing and certification. Upon graduation, they can choose either to pursue further studies or to seek employment. Career opportunities can be found in:

- Laboratory testing professionals for different commodity products, environmental protection, etc.
- Auditors of certification bodies
- Inspection professionals of inspection bodies
- Quality assurance and management personnel
- Marketing of technical products

Estimated Tuition Fee

2021 – 2022 Tuition Fee (HKD)	Maximum Subsidy Amount (HKD)	2021- 2022 Tuition Fee after Deduction of the Maximum Subsidy Amount (HKD)
\$109,480 [#]	\$76,800 [*]	\$32,680 [#]

[#] Tuition fees are charged according to the number of credits for the course taken. The actual tuition fees payable may vary. The above tuition fee has included the laboratory/immersion course fee.

^{*} Only local students are eligible for subsidy under SSSDP

PROGRAMME INFORMATION

Ir Dr Tony Lee
Programme Leader
☎ 3120 2680
✉ clee@ouhk.edu.hk

GENERAL ENQUIRY

Ms Celia Kwok
☎ 3120 2685
✉ snkwok@ouhk.edu.hk



WhatsApp:
9494 3130



WeChat:
9494 3130

